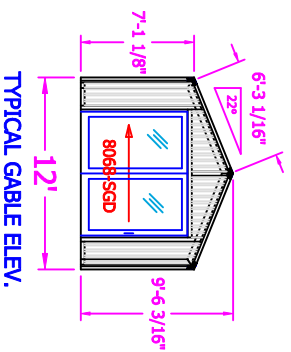
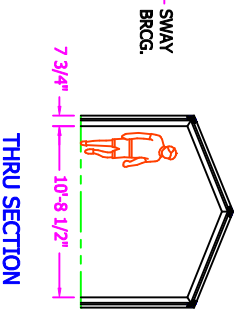
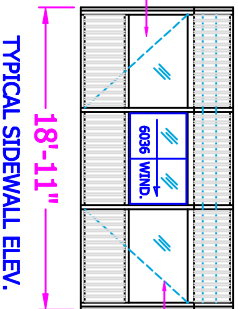


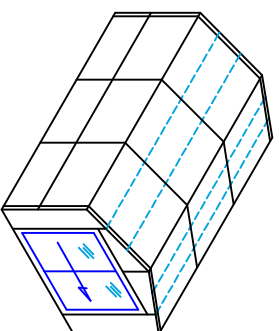
227 SQ. FT.



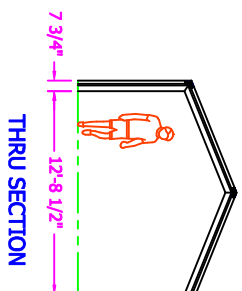
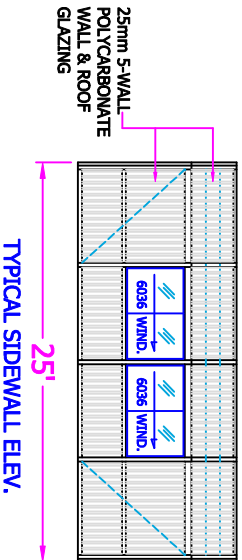
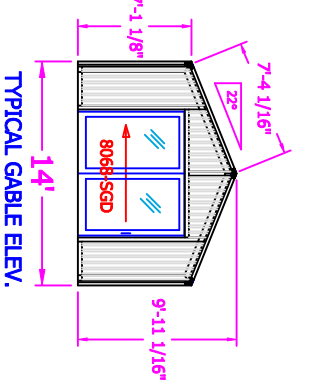
TYPICAL GABLE ELEV.



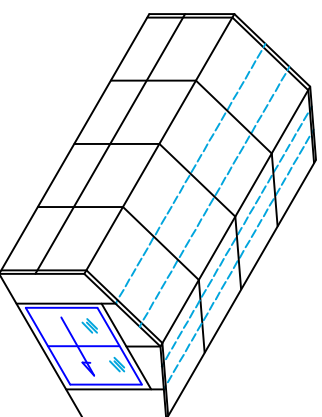
682 S.F.
GLAZED AREA



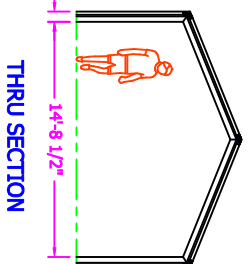
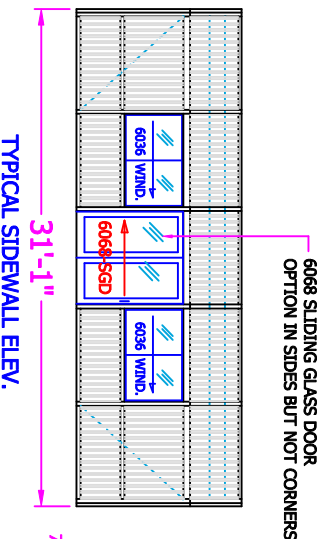
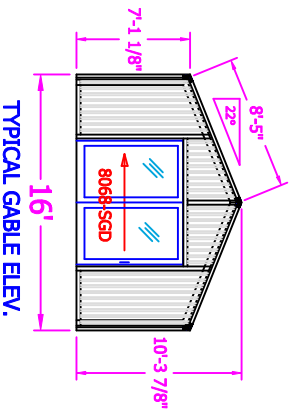
350 SQ. FT.



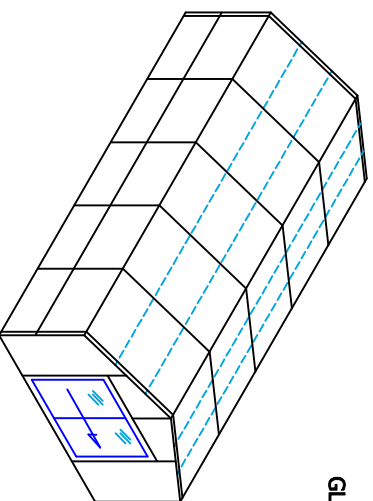
936 S.F.
GLAZED AREA



497 SQ. FT.



1200 S.F.
GLAZED AREA



- PRE-GASKETED FRAMING
- BUILT-IN INTERNAL WEAPAGE SYSTEM / AND ELECT. WIRE CHASE
- THERMALLY BROKEN FRAME SYSTEM WITH GLAZING R-VALUE OF 3.5
- NO EXPOSED FASTENERS / STAINLESS STEEL FASTENERS
- STD. FRAME COLOR: WHITE OR BRONZE DURACRON (BAKED ENAMEL)

GLAZING OPTIONS:
ROOF - 25MM (1") BRONZE OR OPAL 5-WALL WALLS - 25MM CLEAR/BRONZE/OPAL 5-WALL
* 1" CLEAR TEMPERED INSUL. GLASS
ACCESSORIES - SLIDING DOORS & WINDOWS

DESIGN LOADS:
LIVE - 40 PSF
DEAD - 5 PSF
WIND - 90 MPH



©2019 SPACENCL. THIS DRAWING IS THE PROPERTY OF POLY ENCLOSURES, INC. (POLY ENCL). NO PART OF THIS DRAWING IS TO BE REPRODUCED OR TRANSMITTED IN ANY FORM OR BY ANY MEANS WITHOUT THE WRITTEN PERMISSION OF POLY ENCL.

DATE	JOB NAME	DESCRIPTION
SCALE 1/8"=1'-0"	EXAMPLES	GABLED SPA ENCLOSURES
SHEET 1	DRAWING NO.	SPAENCL-GAB